

TotalShredder[™] USB

User's Guide

Copyright Notice

No part of this publication may be copied, transmitted, stored in a retrieval system or translated into any language in any form or by any means without the expressed written permission of FarStone Technology, Inc.

FarStone grants you the right to use one copy of the enclosed software program ("SOFTWARE") on a single computer. If the SOFTWARE is installed on a network, or more than one user can run the SOFTWARE at the same time, you must purchase an additional license for each additional user or computer.

Trademark

FarStone® is a trademark of FarStone Technology, Inc. Microsoft, Windows® and MS-DOS® are registered trademarks of Microsoft Corporation. Other product names mentioned in this User's Guide may be trademarks or registered trademarks of their respective companies.

FarStone Technology, Inc.

U.S. Headquarters:

10415 Slusher Drive, Unit 1,
Santa Fe Springs, CA 90670, USA

Phone: +1-562-373-5370

Fax: +1-650-968-4567

www.farstone.com

Asia-Pacific Offices

9F-4, No.87, Sec 4

Jhongsiao E. Rd.

Taipei City 106, Taiwan

Phone: 886-2-2777-2887

Fax: 886-2-2777-2857

www.farstone.com.tw

Technical Support

Answers to frequently asked questions are posted on our website at www.farstone.com/support/product-support.htm. For other support issues, please contact FarStone Technical Support at www.farstone.com/support.

[Copyright© 2000-2011 FarStone Technology, Inc. All rights reserved.](#)

Software License Agreement

FARSTONE TECHNOLOGY, INC. (FARSTONE) END USER LICENSE AGREEMENT FOR TOTALSHREDDER™ USB KEY, HEREAFTER REFERRED TO AS THE "SOFTWARE"

PLEASE READ CAREFULLY: THE USE OF THIS "SOFTWARE" IS SUBJECT TO THE "SOFTWARE" LICENSE TERMS OF FARSTONE AND OTHER LICENSORS WHO'S SOFTWARE MAY BE BUNDLED WITH THIS PRODUCT.

BY YOUR USE OF THE "SOFTWARE" INCLUDED WITH THIS PRODUCT YOU AGREE TO THE LICENSE TERMS REQUIRED BY THE LICENSOR OF THE "SOFTWARE", AS SET FORTH BELOW. IF YOU DO NOT AGREE TO THE LICENSE TERMS APPLICABLE TO THE "SOFTWARE", YOU MAY RETURN THE ENTIRE UNUSED PRODUCT FOR A FULL REFUND.

LICENSE AND WARRANTY:

The software that accompanies this license (the "Software") is the property of FARSTONE or its licensors and is protected by copyright law. While FARSTONE continues to own the Software, you will have certain rights to use the Software after your acceptance of this license. Except as may be modified by a license addendum which accompanies this license, your rights and obligations with respect to the use of this Software are as follows:

A. Single User License:

(a) Use the "Software" on a single computer system or network, and only by a single user at a time. If you wish to use the "Software" for more users, you will need an additional License for each user.

(b) Make one copy of the "Software" in machine-readable form solely for back-up purposes provided you reproduce FarStone's copyright proprietary legends. Notwithstanding the foregoing, the "Software" may be used on the home, laptop or other secondary computer of the principal user of the "Software", and an additional copy of the "Software" may be made to support such use. As used in this License, the "Software" is "in use" when it is either loaded into RAM or installed on a hard disk or other permanent memory device. The "Software" may be "in use" on only one computer at any given time. (Different License terms and fees are applicable for networked or multiple user applications.) As a specific condition of this License, you agree to use the "Software" in compliance with all applicable laws, including copyright laws, and that you will not copy, transmit, perform or distribute any audio or other content using the "Software" without obtaining all necessary Licenses or permissions from the owner of the content.

B. Multiple User License:

Make one copy of the "Software" in machine-readable form solely for back-up purposes, provided you reproduce FarStone's copyright proprietary legends.

You must acquire and dedicate a License for each separate computer on which any part or portion of the "Software" is installed or run. As used in this License, the "Software" or any part or portion of the "Software" is "in use" when it is either loaded into RAM or installed on a hard disk or other permanent memory device including any networked or shared environment where either direct or indirect connections are made through software or hardware which pools or aggregates connections.

As a specific condition of this License, you agree to use the "Software" in compliance with all applicable laws, including copyright laws, and that you will not copy, transmit, perform or distribute any audio or other content using the "Software" without obtaining all necessary Licenses or permissions from the owner of the content.

C. Restrictions:

You may not distribute copies of the "Software" to others or electronically transfer the "Software" from one computer to another over a network. You may not post or otherwise make available the "Software", or any portion thereof, in any form, on the Internet. You may not use the "Software" in a computer service business, including in time-sharing applications. The "Software" contains trade secrets and, in order to protect them, you may not decompile, reverse engineer, disassemble, or otherwise reduce the "Software" to a human-perceivable form. YOU MAY NOT MODIFY, ADAPT, TRANSLATE, RENT, LEASE, LOAN, RESELL FOR PROFIT, DISTRIBUTE, NETWORK OR CREATE DERIVATIVE WORKS BASED UPON THE "SOFTWARE" OR ANY PART THEREOF.

D. Limited Warranty:

FarStone warrants that the media on which the Software is distributed will be free from defects for a period of fourteen (14) days from the date of delivery of the Software to you. Your sole remedy in the event of a breach of this warranty will be that FarStone will, at its option, replace any defective media returned to FarStone within the warranty period or refund the money you paid for the Software. FarStone does not warrant that the Software will meet your requirements or that operation of the Software will be uninterrupted or that the Software will be error-free.

THE ABOVE WARRANTY IS EXCLUSIVE AND IN LIEU OF ALL OTHER WARRANTIES, WHETHER EXPRESS OR IMPLIED, INCLUDING THE IMPLIED WARRANTIES OF MERCHANTABILITY, FITNESS FOR A PARTICULAR PURPOSE AND NONINFRINGEMENT. THIS WARRANTY GIVES YOU SPECIFIC LEGAL RIGHTS. YOU MAY HAVE OTHER RIGHTS, WHICH VARY FROM STATE TO STATE.

E. Limitation of Liability:

IN NO EVENT WILL FARSTONE OR ITS LICENSORS BE LIABLE TO YOU FOR ANY INCIDENTAL, CONSEQUENTIAL OR INDIRECT DAMAGES, INCLUDING ANY LOST PROFITS, LOST SAVINGS, OR LOSS OF DATA, EVEN IF FARSTONE OR A LICENSOR HAS BEEN ADVISED OF THE POSSIBILITY OF SUCH DAMAGES, OR FOR ANY CLAIM BY ANY OTHER PARTY. Some states do not allow the exclusion or limitation of special, incidental, or consequential damages, so the

above limitation or exclusion may not apply to you.

F. General:

You acknowledge that you have read this Agreement, understand it, and that by using the "Software" you agree to be bound by its terms and conditions. You further agree that it is the complete and exclusive statement of the agreement between FarStone and you, and supersedes any proposal or prior agreement, oral or written, and any other communication between FarStone and you relating to the subject matter of this Agreement. No additional or any different terms will be enforceable against FarStone unless FarStone gives its express consent, including an express waiver of the terms of this Agreement, in writing signed by an officer of FarStone. You assume full responsibility for the use of the "Software" and agree to use the "Software" legally and responsibly.

Should any provision of this Agreement be declared unenforceable in any jurisdiction, and then such provision shall be deemed severable from this Agreement and shall not affect the remainder hereof. FarStone reserves all rights in the "Software" not specifically granted in this Agreement.

Additional Terms and Conditions:

In addition to the above agreement, the following terms and conditions will also apply to Your use of the Software:

A. You may use the Software on one Device to clone, or apply an image of a hard drive on that Device, or to another hard drive on the same Device, a replacement Device, secondary media, or network drive.

B. You may use the Software on a Device to create an image file of a hard drive on that Device and store the image file on fixed or removable media for disaster recovery purposes.

C. You may use the Software as a boot disk to re-apply the hard drive image that was created for disaster recovery purposes to the hard drive on the Device from which the disaster recovery image was made or on a replacement Device provided that the software has been removed from the original Device.

D. You may use the Software to clone a hard drive from a Device to a replacement Device, in the manner described in the Software documentation and to use the Software on the replacement Device provided that the Software has been removed from the original Device.

E. You may not use the Software commercially or non-commercially for the purpose of creating an image on multiple Devices or hard drives, except for multiple hard drives installed in or attached directly to the original Device.

F. For the purposes of this License Agreement, a virtual device is considered the same as a physical device.

G. If the Software you have licensed includes the Pre-OS the following uses and restrictions apply to the Software:

(i) The Pre-OS contains Windows® software licensed from Microsoft Corporation. Microsoft Corporation has no liability to You for the Component. Any support for the Component will be provided by FarStone in accordance with FarStone's then-current support guidelines.

(ii) THE PRE-OS CONTAINS A TIME-OUT FEATURE THAT WILL AUTOMATICALLY RE-BOOT THE DEVICE AFTER SEVENTY-TWO HOURS OF CONTINUOUS USE. THIS TIME-OUT FEATURE WILL RESET EACH TIME THE COMPONENT IS RE-LAUNCHED.

(iii) The Pre-OS may be used as a boot, diagnostic, disaster recovery, setup, restoration, emergency service, installation, test, and configuration utility program. Use of the Component as a general purpose operating system or as a substitute for a fully functional version of any operating system product is strictly prohibited.

Windows® is a registered trademark of Microsoft Corporation.

Should you have any questions concerning this Agreement, you may contact FarStone by writing to:

FarStone Technology, Inc.

Legal Department

10415 Slusher Drive, Unit 1,
Santa Fe Springs, CA 90670, USA

Contents

Copyright Notice	2
Software License Agreement	3
<i>Chapter 1: Introduction</i>	<i>8</i>
1.1 Product Overview	8
1.2 Features and Benefits	8
1.3 System Requirements	8
<i>Chapter 2: Use TotalShredder™ 7 USB</i>	<i>10</i>
2.1 Enter TotalShredder™ 7 USB	10
2.1.1 Boot via Start-up CD/DVD Disc	10
2.1.2 Boot via Bootable USB Disk	10
2.2 TotalShredder™ 7 USB Main Console	10
2.2.1 Quick Start	11
2.2.2 Analyze	12
2.2.3 Tools	13
<i>Chapter 3: Appendix</i>	<i>15</i>
3.1 Frequently Asked Questions	15

Chapter 1: Introduction

1.1 Product Overview

TotalShredder™ 7 USB can erase all data on the specified partition(s) or the entire hard drive, and the erased data cannot be recovered after eradication. Be cautious before operating this function.

1.2 Features and Benefits

Data Shredding - US DoD 5220.22-M Standard Complied

Complies with the US Department of Defense (DoD) 5220.22-M clearing standard. Securely wipe out your hard drive contents from outside of Windows.

Win-PE engine

100% compatible with existing hardware and future hardware.

1.3 System Requirements

Supported Operating Systems

- Windows 7 Series(32-bit & x64)
- Windows Vista Series(32-bit & x64)
- Windows 2008 Series(32-bit & x64)
- Windows XP Series(32-bit & x64)
- Windows 2003 Series(32-bit & x64)
- Windows 2000 Series(32-bit & x64)
- Linux
- Unix

CPU: Pentium-class processor or higher

- RAM: 512 MB
- Disk space: No installation required

Supported File Systems

- FAT16/32, NTFS, Linux Ext2/Ext3, ReiserFS, Linux Swap and other unknown partitions.

Chapter 2: Use TotalShredder™ 7 USB

2.1 Enter TotalShredder™ 7 USB

2.1.1 Boot via Start-up CD/DVD Disc

To use **TotalShredder™ 7 USB** with a Start-up CD/DVD Disc:

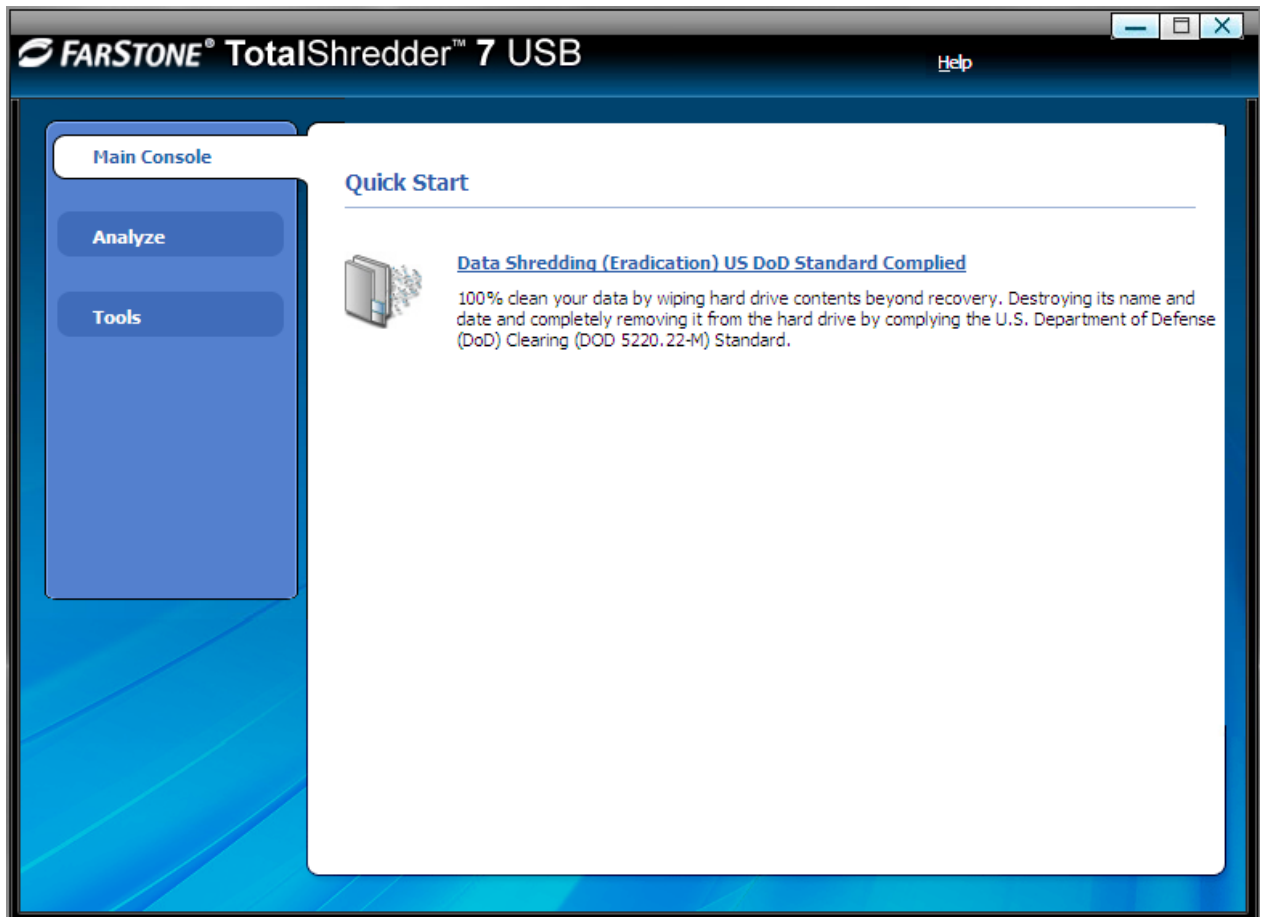
Insert the Start-up Disc and restart your computer, and then enter the BIOS to set the CD/DVD ROM as the first boot device.

2.1.2 Boot via Bootable USB Disk

To launch **TotalShredder™ 7 USB** with Bootable USB Disk:

1. Connect the USB device, start your computer, enter the BIOS to set the USB device as the first bootable option, and save your settings.
2. Restart the system and boot from the USB device.
3. Click **Yes** to back up the entire system to the USB device automatically. Or click **No** to enter **TotalShredder™ 7 USB** main console.
4. Verify all information about this complete backup, and then click **Next** to launch it.
5. Click **Finish** to complete the backup and return to main console.

2.2 TotalShredder™ 7 USB Main Console



2.2.1 Quick Start

Data Shredding (Eradication) US Department of Defense Standard Complied – Click here to erase all data on a specified partition or the entire hard drive.

1. Select **Data Shredding** tab.
2. Select the partition(s) or the entire hard drive and enter the times (maximum of 49) you want to operate eradication.



Tip

1. If there is only one partition in a disk, select the partition and the program will select the disk automatically.
2. If there is only one drive, select the drive and the program will select the

partition automatically.

3. Confirm all information and then click **Start Now**.
4. Carefully read the warning message and click **OK** to continue, or click **Cancel** to return to main console.
5. Click **Finish** to return to main console.



Tip

If the eradication operation is interrupted, the partition and all data on it may be damaged.

2.2.2 Analyze

2.2.2.1 open Command Shell window

The command shell executes programs and displays their output on the screen by using individual characters. You can use the command shell to create and edit batch files (also called scripts) to automate routine tasks. You can perform operations more efficiently by using batch files than you can by using the user interface.

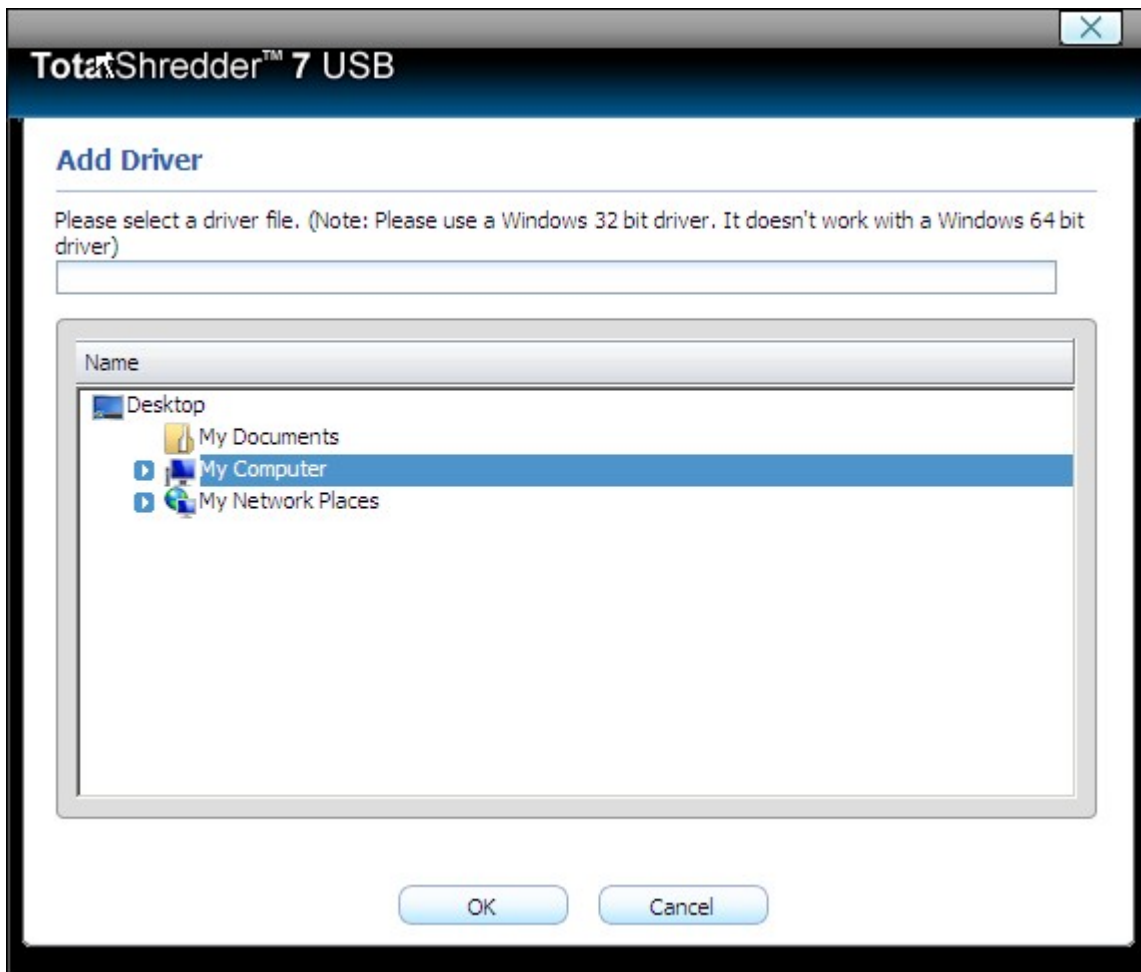
1. Select **Analyze** tab and click on **Open Command Shell Window** icon.
2. Put in the command in the pop-up window and press **Enter** key.
3. Close the window after the command completes.

2.2.3 Tools

2.2.3.1 Add Driver

If **TotalShredder™ 7 USB** cannot detect a compatible and available driver for the application you need, you can install third party driver manually.

1. Select **Tools** tab and click on **Add Driver** icon.
2. Select the driver file on the local computer or on the network.



3. Click **OK**.

The added driver(s) can now work with the matched applications.

2.2.3.2 Open Explorer Window

Select Tools tab, then click **Open Explorer Window**, files and folders on your computer will be displayed.

Chapter 3: Appendix

3.1 Frequently Asked Questions

Q. Why TotalShredder™ is better than others?

A. Any other shredding product (for example DriveScrubber, WipeDrive, or DriveErase) used in Windows still leaves traces on your drive - and tracing software can easily be hidden. FarStone's unique self-bootable TotalShredder USB securely deletes all traces of sensitive data from outside of the Windows environment.

Q. Do I need a CD to boot up the system?

A. No, TotalShredder USB has everything embedded as a bootable device. Simply plug in and reboot the system.

Q. How do I get help if I need it?

A. If you need assistance with any of our products, please refer to the comprehensive User Guide available on our website. If you are unable to find the solution you are looking for, obtain a [Support Ticket](#) to get in touch with our Technical Support.

Q. Does the TotalShredder™ USB conflict with any other applications?

A. TotalShredder has no compatibility issue with other software. **TotalShredder™** USB runs outside of the Windows.

Q. Where can I purchase FarStone products?

A. FarStone's software products can be downloaded from our online product pages, or purchased any of our reseller partners. If you originally purchased a FarStone product from an authorized Value Added Reseller (VAR), you may wish to contact your reseller to purchase additional products. To purchase any of FarStone's hardware solutions, please call +1-562-373-5370 and ask to speak with a representative.

Q. What are the latest prices?

A. The latest prices (MSRP) for FarStone Technology's software are posted on the website. Please contact your representative at +1-562-373-5370 for hardware prices.

Q. How are your products licensed?

A. Each product is licensed per machine, unless otherwise stated (i.e, purchasing a multiple license bundle). If you wish to install and activate the product on multiple machines, you will need to purchase additional licenses.

Q. Why couldn't I install 64-bit driver for my RAID card in Pre-OS Recovery Manager?

A. Please use 32-bit driver and try again.